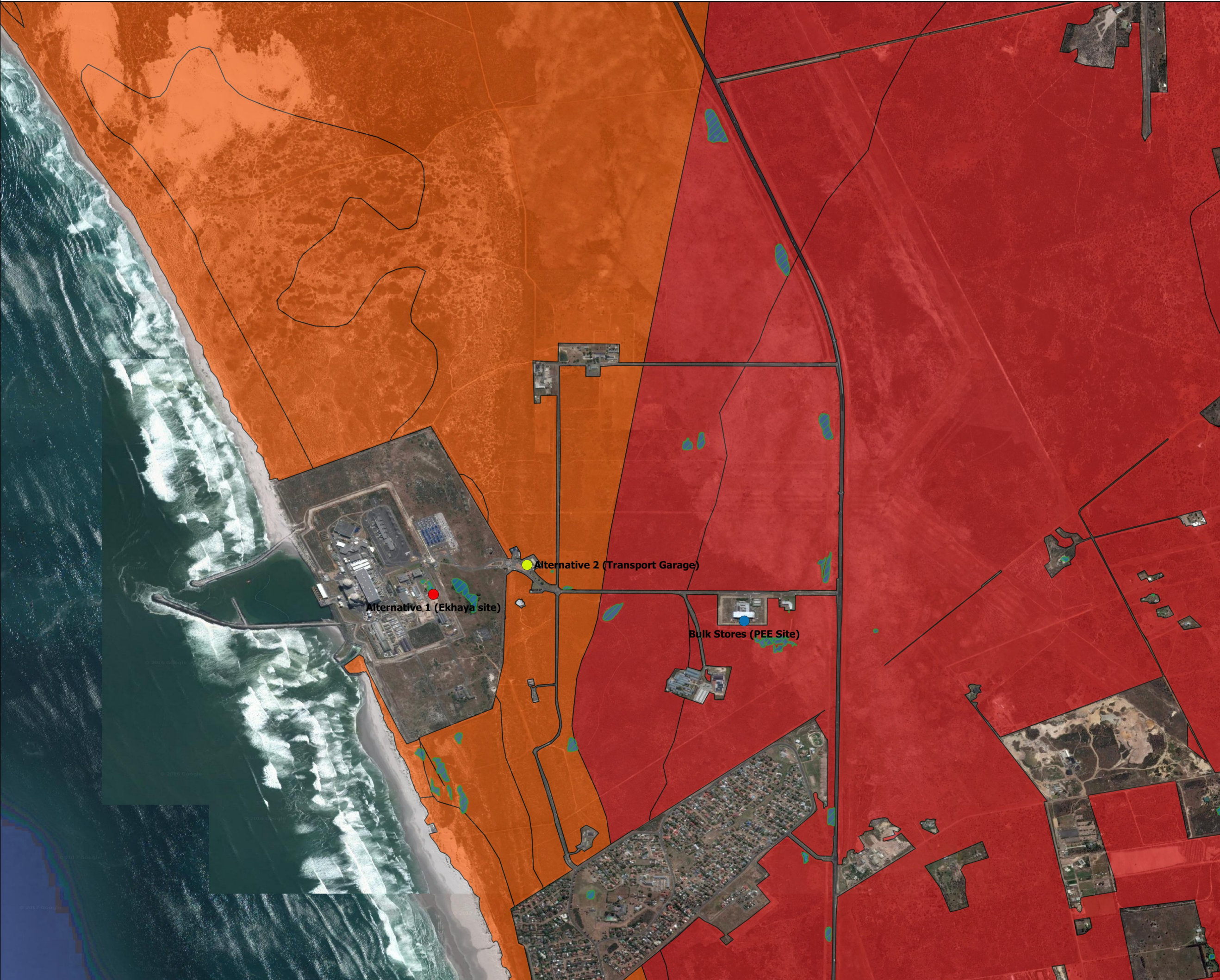


# The Proposed Expansion of the Diesel Storage Facilities at the Koeberg Nuclear Power Station, Farm Duynefontyn No. 1552, Melkbosstrand

## Sensitivity Map (Map 1 of 3)



### Legend

- Farm Duynefontyn No. 1552
- Alternative 1 (Ekhaya site)
- Alternative 2 (Transport Garage)
- Bulk Stores (PEE Site)
- Wetlands

Vegetation Ecosystem Status

- CR
- EN
- VU

Site Coordinates:  
33°40'37.40"S  
18°26'8.33"E

Datum: WGS84  
Projection: Geographic

Scale: 1:12 500 (on A3)



Date: 01 February 2017

DJEC Ref. 2015/19

Prepared by:

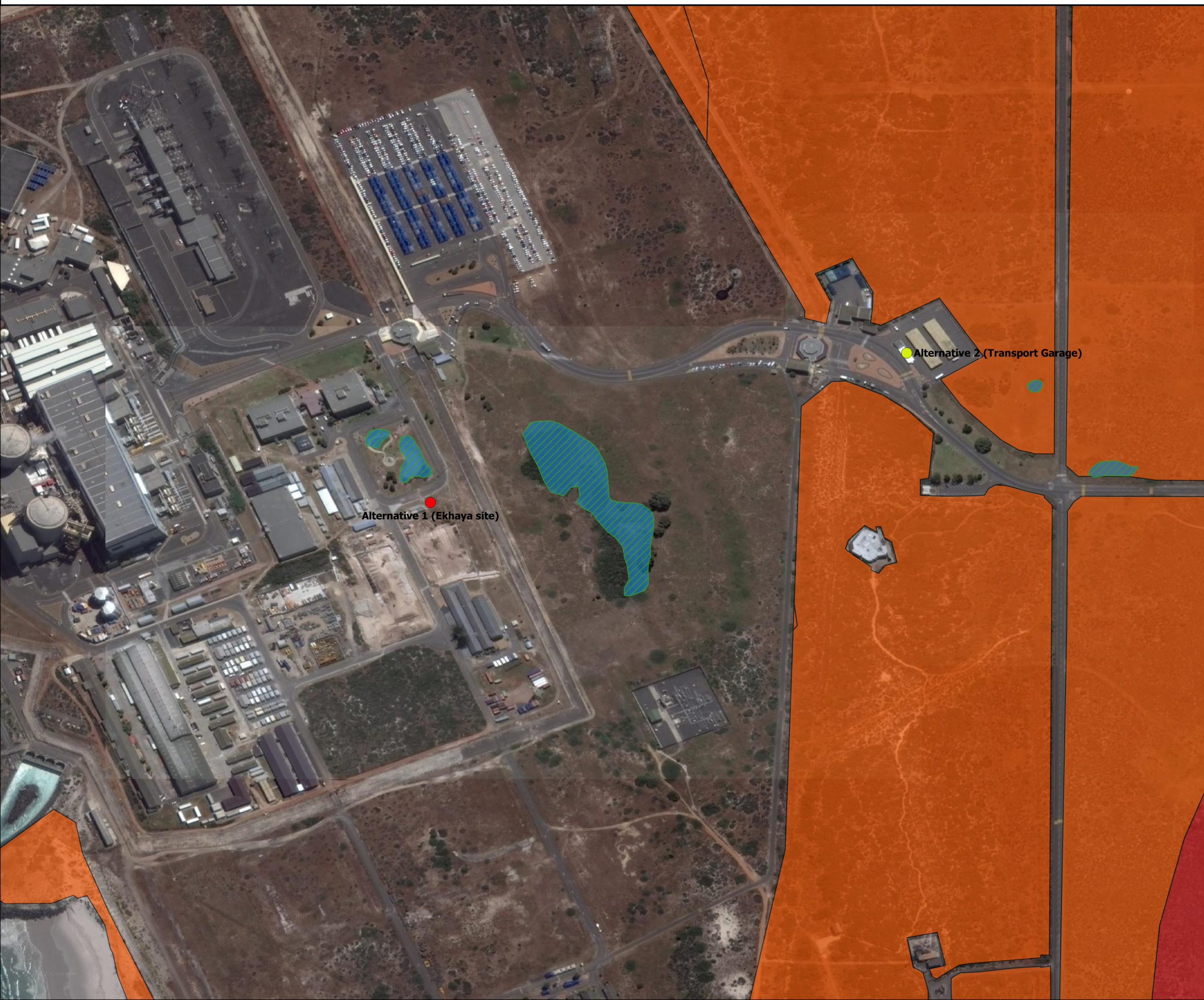


DOUG JEFFERY  
Environmental Consultants (Pty) Ltd.



# The Proposed Expansion of the Diesel Storage Facilities at the Koeberg Nuclear Power Station, Farm Duynfontyn No. 1552, Melkbosstrand

## Sensitivity Map (Map 2 of 3)



### Legend

- Alternative 1 (Ekhaya site)
  - Alternative 2 (Transport Garage)
  - Wetlands
- Vegetation Ecosystem Status
- CR
  - EN
  - VU

Site Coordinates:  
33°40'37.40"S  
18°26'8.33"E

Datum: WGS84  
Projection: Geographic

Scale: 1:2 500 (on A3)



Date: 01 Februarie 2017

DJEC Ref. 2015/19

Prepared by:



DOUG JEFFERY  
Environmental Consultants (Pty) Ltd.



# The Proposed Expansion of the Diesel Storage Facilities at the Koeberg Nuclear Power Station, Farm Duynefontyn No. 1552, Melkbosstrand

## Sensitivity Map (Map 3 of 3)

### Legend

● Bulk Stores (PEE Site)

▨ Wetlands

Vegetation Ecosystem Status

■ CR

■ EN

■ VU



Site Coordinates:  
33°40'37.40"S  
18°26'8.33"E

Datum: WGS84  
Projection: Geographic

Scale: 1:2 500 (on A3)



Date: 01 February 2017

DJEC Ref. 2015/19

Prepared by:



DOUG JEFFERY  
Environmental Consultants (Pty) Ltd.